

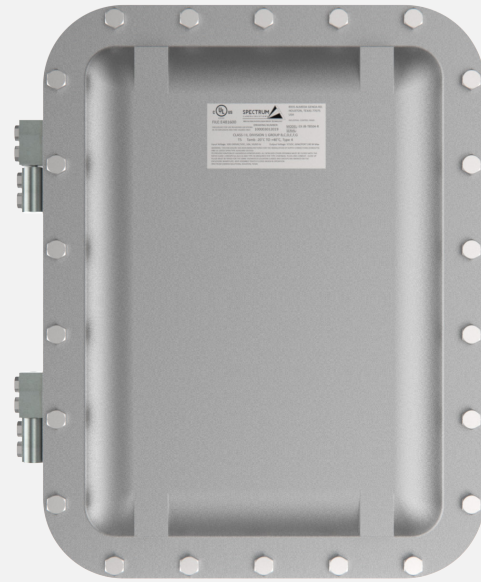
# Spectrum EX-JB-H-POE-8-BD

Explosion-proof junction box

## Features

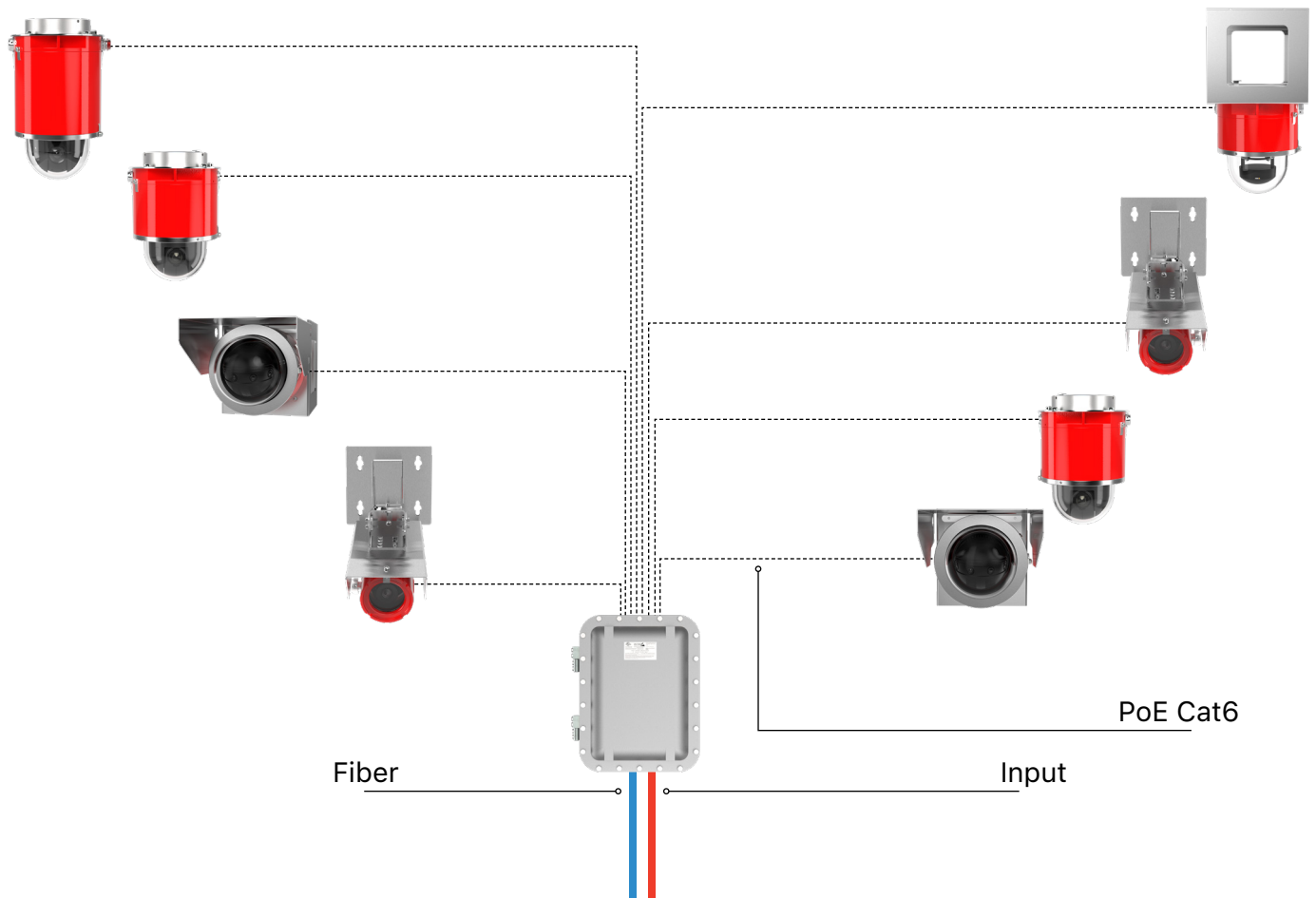
- Manage up to 8 devices
- NEMA TS-2 Compliant
- UL Listed
- Class I/II
- Division 1
- Groups BCDEFG T5
- -25°C to +40°C

Max PoE Budget 480 watts  
 60 watts for (8) ports simultaneously  
 Up to 90 watts on (4) ports simultaneously



## Description

Spectrum EX-JB-H-POE-8-BD houses the ruggedized switch is perfect for challenging environments when mounted inside a surveillance cabinet. It is designed to withstand shock, vibrations and temperatures from -25°C to +40°C , making it perfect for high demanding installation such as critical infrastructures. UL Listed Class I II Div 1 Gr. BCDEFG T5





# Specifications

## Spectrum EX-JB-H-POE-8-BD

### Tech Specs

Switch details	The SISPM1040-582-LRT is a managed PoE++ switch suitable for connecting and powering devices in hardened environments. It has (8) 10/100/1000 PoE++ ports with (2) 100/1000 dual speed SFP slots. The switch can supply up to 90 Watts per port on (4) ports or 60 Watts per port on (8) ports simultaneously. The switch also includes the embedded Device Management System (DMS) software that provides the advanced tools necessary for total management of all IP addressable devices. The unique DMS provides security integrators with lower overall cost, less downtime and easier management of the entire PoE+ network
Standards	IEEE 802.3 IEEE 802.3u IEEE 802.3z IEEE 802.3ae IEEE 802.3x IEEE 802.3ad IEEE 802.1D IEEE 802.1w IEEE 802.1s IEEE 802.1Q IEEE 802.1p IEEE 802.1ad IEEE 802.1AB IEEE 802.3af IEEE 802.3at IEEE 802.3bt IEEE 802.3ah IEEE 802.1ag IEEE 802.3az IEEE 1588 v2 ITU-T Y.1731 ITU-T G.8031 ITU-T G.8032 IEC62439-2
Protocols	CSMA/CD
Technology	Store-and-forward switching architecture
Connectors	(8) 10/100/1000 Mbps RJ-45 ports (2) 100/1000 Mbps SFP slots (1) Console RJ-45 port
MAC Address	8K MAC address table
Backplane	20 Gbps
DIP Switch	Rapid Ring Setting (2-Pin)
Reset Button	Reset the switch, restore factory default
Digital Output (relay)	24VDC/1A
Digital Input	Level 0 (low): 0V to 6V Level 1 (high): 10v to 24V
Power Consumption	13 Watts (without PoE)
Power Input	52 - 57VDC
Power over ethernet	Max PoE Budget 480 watts 60 watts for (8) ports simultaneously Up to 90 watts on (4) ports simultaneously
<b>General</b>	
Dimensions	444.5 x 342.9 x 215.9 mm ( 17 ½ x 13 ½ x 8 ½ in. )
Weight	28.21 kg ( 62.2 lb )
Material	Aluminum
Operating Conditions	-25°C to +40°C
UL Listed File Number	E481600
Explosion-proof Certifications	Class I/II Division 1 Groups BCDEFG T5
Warranty	3-year limited warranty, see <a href="http://spectrumcamera.com/warranty">spectrumcamera.com/warranty</a>

# Approvals

 LISTED FILE: E481600	 SPECIALIZING IN EXPLOSION PROOF TECHNOLOGY DRAWING NUMBER:	8935 ALMEDA GENOA RD. HOUSTON, TEXAS 77075 USA INDUSTRIAL CONTROL PANEL MODEL: EX-JB-H-POE-8-BD SERIAL:
ENCLOSURE FOR USE IN HAZARDOUS LOCATIONS. AS TO EXPLOSION AND FIRE HAZARD ONLY.		
CLASS I II, DIVISION 1 GROUP B,C,D,E,F,G T5 Tamb -25°C TO +40°C, Type 4		
Input Voltage: 90-120VAC, 5A, 47-63 Hz Output Voltage: IEEE 802.3bt/IEEE 802.3at/IEEE 802.3at, 60W/PORT 480 W Max		
WARNING: THIS ENCLOSURE HAS BEEN MANUFACTURED FOR THE INSTALLATION OF SUPPLY CONNECTIONS (CONDUITS) AND UL LISTED OPEN TYPE AUXILIARY DEVICES TO PREVENT IGNITION OF HAZARDOUS ATMOSPHERES. ALL NONUSED COVER OPENINGS MUST BE CLOSED WITH THE RATED CLASS I, GROUPS B,C,D,E,F,G AND TYPE 4X (REQUIRED FOR TYPE 4 RATINGS) PLUGS AND CONDUIT. CLOSE UP PLUGS MUST BE RATED FOR THE SAME HAZARDOUS LOCATION CLASSES AND GROUPS ARE MARKED ON THE ENCLOSURE NAMEPLATE. KEEP ASSEMBLY TIGHTLY CLOSED WHEN IN OPERATION SPECTRUM CAMERA SOLUTIONS, HOUSTON, TEXAS		