

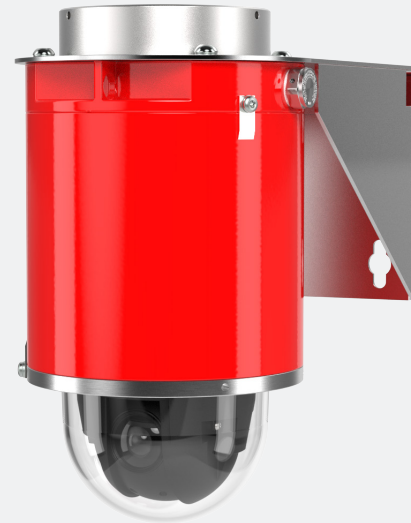
Spectrum D201-X-Q6078-E-BD

Explosion-Proof Ultra-HD 4K PTZ Camera

EXPLSION
PROOF CAMERA

Key Features

- UHD 4K with 20x optical zoom
- Outstanding images with great details
- Zipstream with support for H.264/H.265
- Built-in cybersecurity features
- Reliable Securing Kit included
- Made in USA
- NDAA-Compliant
- cFMus, Class I/II/III, Division 1, Zone 1/21, IECEx, ATEX, INMETRO, UKCA and PESO approved.
- Operating Temperature: -20°C to +50°C (-4°F to 122°F)



Axis Camera Inside



Description

Spectrum D201-X-Q6078-E-BD explosion-proof PTZ camera provides Ultra-HD 4K resolution with 20x optical zoom for outstanding video quality. Enclosed in a patented stainless-steel or red aluminum explosion-proof housing, it's certified (cFMus, IECEx, ATEX, INMETRO, UKCA and PESO approved) for use in potentially combustible environments. Spectrum D201-X-Q6078-E-BD features Axis Autotracking 2 with click and track functionality, along with an orientation aid for active object tracking and quick orientation. Built-in cybersecurity features such as signed firmware and secure boot ensures the integrity and authenticity of the firmware. Bandwidth and storage requirements are significantly reduced thanks to Axis Zipstream.

Specifications

Spectrum D201-X-Q6078-E-BD

Camera		Event conditions	Device status: above operating temperature, above or below operating temperature, below operating temperature, fan failure, IP address removed, network lost, new IP address, shock detected, storage failure, system ready, within operating temperature Edge storage: recording ongoing, storage disruption I/O: manual trigger, virtual input MQTT subscribe PTZ: PTZ malfunctioning, PTZ movement, PTZ preset position reached, PTZ ready Scheduled and recurring: scheduled event Video: live stream open
Image sensor	1/2.5" progressive scan RGB CMOS	Event actions	Day/night mode, overlay text, video recording to edge storage, pre- and post-alarm video buffering, send SNMP trap PTZ: PTZ preset, start/stop guard tour File upload via FTP, SFTP, HTTP, HTTPS network share and email MQTT publish Notification via email, HTTP, HTTPS and TCP
Lens	4.4–88.4 mm, F2.0–3.8 Horizontal field of view: 68.3°–4.2° Vertical field of view: 42.1°–2.34° Autofocus, P-iris control	Data streaming	Event data
Day and night	Automatically removable infrared-cut filter	Built-in installation aids	Pixel counter, leveling guide
Minimum illumination	Color: 0.2 lux at 30 IRE, F2.0 B/W: 0.002 lux at 30 IRE, F2.0	Analytics	
Shutter speed	1/10000 s to 1 s	Applications	Included AXIS Object Analytics, AXIS Video Motion Detection, AXIS Motion Guard, AXIS Fence Guard, AXIS Loitering Guard, autotracking 2, active gatekeeper, AXIS OSDI Zones, Orientation Aid PTZ Support for AXIS Camera Application Platform enabling installation of third-party applications, see axis.com/acap
Pan/Tilt/Zoom	Pan: 360° endless, 0.05°–450°/s Tilt: 220°, 0.05°–450°/s Zoom: 20x optical, 12x digital, total 240x zoom E-flip, 256 preset positions, tour recording (max 10, max duration 16 minutes each), guard tour (max 100), control queue, on-screen directional indicator, orientation aid PTZ, set new pan 0°, adjustable zoom speed, focus recall	Axis Object Analytics	Object classes: humans, vehicles Trigger conditions: line crossing, object in area Up to 10 scenarios Metadata visualized with color-coded bounding boxes Polygon include/exclude areas Perspective configuration ONVIF Motion Alarm event
Sensor	AXIS Q6078-E	General	
System on chip (SoC)		Casing (x)	A = Aluminum S = Stainless Steel
Model	ARTPEC-7	Weight	A = 32 lbs (14 kg) S = 68 lbs (28 kg)
Memory	2 GB RAM, 512 MB Flash	Dimensions	Height: 15.9 in (404 mm) ø 8.6 in (218 mm)
Compute capabilities	Machine learning processing unit (MLPU)	Power	44 - 57 Vdc 51W
Video		Storage Conditions	-40°C to 65°C (-40°F to 149°F)
Video compression	H.264 (MPEG-4 Part 10/AVC) Baseline, Main and High Profiles H.265 (MPEG-H Part 2/HEVC) Main Profile Motion JPEG	Operating Conditions	-20°C to +50°C (-4°F to 122°F) Humidity 10-100% RH (condensing)
Resolution	3840x2160 4K 2160p to 320x180	Warranty	5-year limited warranty, see spectrumcamera.com/warranty for more information
Frame rate	Up to 25/30 fps (50/60 Hz) in 4K Up to 50/60 fps (50/60 Hz) in all other resolutions		
Video streaming	Multiple, individually configurable streams in H.264, H.265 and Motion JPEG Axis Zipstream technology in H.264 and H.265 Controllable frame rate and bandwidth VBR/ABR/MBR H.264/H.265		
Image settings	Manual shutter time, compression, color, brightness, sharpness, WDR – dynamic contrast, white balance, exposure control, exposure zones, fine tuning of behavior at low light, rotation: 0°, 180°, text and image overlay, polygon privacy masks, electronic image stabilization (EIS), freeze on PTZ, defog, backlight compensation, scene profiles		
Network			
Security	Password protection, IP address filtering, HTTPSa encryption, IEEE 802.1x (EAP-TLS)a network access control, digest authentication, user access log, centralized certificate management, brute force delay protection, signed firmware, secure boot, Axis Edge Vault, Axis device ID, secure keystore (CC EAL4 certified), TPM (FIPS 140-2 certified)		
Supported protocols	IPv4, IPv6 USGv6, ICMPv4/ICMPv6, HTTP, HTTP/2, HTTPSa, TLSa, QoS Layer 3 DiffServ, FTP, SFTP, CIFS/SMB, SMTP, mDNS (Bonjour), UPnP®, SNMP v1/v2c/v3 (MIB-II), DNS/DNSv6, DDNS, NTP, RTSP, RTP, SRTP, TCP, UDP, IGMPv1/v2/v3, RTCP, ICMP, DHCPv4/v6, ARP, SOCKS, SSH, NTCIP, LLDP, CDP, MQTT v3.1.1, Syslog, Link-Local address (ZeroConf)		
System integration			
Application programming interface	Open API for software integration, including VAPIX® and AXIS Camera Application Platform; specifications at axis.com One-Click Cloud Connection ONVIF® Profile G, ONVIF® Profile S and ONVIF® Profile T, specification at onvif.org		

Specifications (continued)

Approvals	<p>Hazardous Area FM3600, FM3615, ANSI/ISA/EN/IEC/CAN/CSA-C22.2 60079-0, ANSI/UL/EN/IEC/CAN/CSA-C22.2 60079-1, ANSI/UL/EN/IEC/CAN/CSA-C22.2 60079-31</p> <p>EMC EN 55032 Class A, EN 50121-4, IEC 62236-4, EN 55024, EN 61000-6-1, EN 61000-6-2, FCC Part 15 Subpart B Class A, ICES-003 Class A, VCCI Class A, RCM AS/NZS CISPR 32 Class A, KC KN32 Class A, KC KN35</p> <p>Safety IEC/EN/UL 60950-22, IEC/EN/UL 62368-1, IS 13252</p> <p>Environment IEC 60068-2-1, IEC 60068-2-2, IEC 60068-2-6, IEC 60068-2-14, IEC 60068-2-27, IEC 60068-2-78, IEC/EN 60529 IP66/IP67, IEC/EN 62262 IK10, NEMA 250 Type 4X, NEMA TS 2 (2.2.7-2.2.9)</p> <p>Network NIST SP500-267</p>
Explosion-proof Certifications	<p>USA (Divisions): Class I Division 1 Groups B,C,D T6, type 4X, IP66/67 Class II/III, Division 1, Groups E,F,G T6 Ta = -20°C to +50°C Certificate: FM17US0156X</p> <p>USA and Canada (Zones): Class I, Zone 1, AEx/Ex db IIB+H2 T6 Gb Ta -20°C to +50°C, Type 4X, IP66/67 Zone 21, AEx/Ex tb IIIC T85 °C Db Ta = -20°C to +50°C, Type 4X, IP66/67 Certificate: FM17US0156X and FM18CA0103X</p> <p>ATEX: II 2 G Ex db IIB+H2 T6 Gb Ta = -20°C to +50°C, IP66/67 II 2 D Ex tb IIIC T85 °C Db Ta = -20°C to +50°C, IP66/67 Certificate: FM18ATEX0057X</p> <p>IECEx: Ex db IIB+H2 T6 Gb Ta = -20°C to +50°C, IP66/67 Ex tb IIIC T85 °C Db Ta = -20°C to +50°C, IP66/67 Certificate: FMG 18.0020X</p> <p>INMETRO: Ex db IIB+H2 T6 Gb Ta = -20°C to +50°C, IP66/67 Ex tb IIIC Db T85 °C Ta = -20°C to +50°C, IP66/67 Certificate number: NCC 20.0083 X</p> <p>PESO: Ex db IIB+H2 T6 Gb Ta = -20°C to +50°C, IP66/67 Ex tb IIIC T85 °C Db Ta = -20°C to +50°C, IP66/67 Certificate: FMG 18.0020X Approval No: A/P/HQ/MH/104/7899 (P578984)</p>
Video Management Software	<p>AXIS Companion, AXIS Camera Station, Video management software from Axis' Application Development Partners available on www.axis.com/vms</p>
Languages (Camera)	<p>English, German, French, Spanish, Italian, Russian, Simplified Chinese, Japanese, Korean, Portuguese, Traditional Chinese</p>

Approvals & Dimensions



FM
APPROVED




SPECTRUM
CAMERA SOLUTIONS
SPECIALIZING IN EXPLOSION PROOF TECHNOLOGY

8935 ALMEDA GENOA RD.
HOUSTON, TEXAS 77075
USA


CERT NO. FM17US0156X
 INPUT: 44-57 Vdc 51W
 MODEL NUMBER: D201-A-Q6078-E-BD SERIAL: TIME-MO-DY-YEAR
 Class I Division 1 Groups B,C,D T6, Type 4X, IP66
 Class II/III, Division 1, Groups E,F,G T6

-WARNINGS: Ta = -20°C to +50°C
 -NOT INCLUDING KETONE OR ESTER ATMOSPHERES
 -CONDUIT ENTRIES ARE M20 X 1.5
 -DO NOT OPEN WHEN AN EXPLOSIVE ATMOSPHERE MAY BE PRESENT
 -INSTALL SEAL AT ENCLOSURE ENTRY

US Patent 9917428
 US Patent D858611




SPECTRUM
CAMERA SOLUTIONS
SPECIALIZING IN EXPLOSION PROOF TECHNOLOGY
8935 ALMEDA GENOA RD. HOUSTON, TEXAS 77075 USA



FM
APPROVED

MADE IN USA
CERT NO.
FM17US0156X
FM18CA0103X



CE
UK
CA


MODEL: D201-A-Q6078-E-BD SERIAL: TIME-MO-DY-YEAR
 INPUT: 44-57 Vdc 51W
 Class I, Zone 1, AEx/Ex db IIB+H2 T6 Gb Ta = -20°C to +50°C, Type 4X, IP66
 Zone 21, AEx/Ex tb IIIC T85°C Db Ta = -20°C to +50°C, Type 4X, IP66

II 2 G Ex db IIB+H2 T6 Gb Ta = -20°C to +50°C, IP66
 II 2 D Ex tb IIIC T85°C Db Ta = -20°C to +50°C, IP66

CERT NO. FM18ATEX0057X, IECEx FMG 18.0020X, FM22UKEX0028X

WARNING: DO NOT OPEN WHEN ENERGIZED OR WHEN AN EXPLOSIVE ATMOSPHERE MAY BE PRESENT
 INSTALL SEAL AT ENCLOSURE ENTRY

www.spectrumcamera.com US Patent 9917428
 US Patent D858611




SPECTRUM
CAMERA SOLUTIONS
SPECIALIZING IN EXPLOSION PROOF TECHNOLOGY
8935 ALMEDA GENOA RD. HOUSTON, TEXAS 77075 USA

FABRICADO NO EUA
CERT NO. NCC 20.0083 X
MODELO: D201-A-Q6078-E-BD
ALIMENTAÇÃO: 57Vdc 51W


No. SERIE: TIME-DY-MN-YEAR

Segurança



INMETRO OCP 0034
Ex db IIB+H2 Gb Ta = -20°C to +50°C, IP66
Ex tb IIIC T85°C Db Ta = -20°C to +50°C
NCC 20.0083 X

NCC 20.0083 X
Ex db IIB+H2 T6 Gb Ta = -20°C to +50°C
Ex tb IIIC T85°C Db Ta = -20°C to +50°C
IP66



ATENÇÃO:
 - ENTRADAS DE CABOS M20 X 1.5
 - NÃO ABRA ENQUANTO UMA ATMOSFERA EXPLOSIVA PUDE ESTAR PRESENTE
 - INSTALAR ANEL DE VEDAÇÃO NAS ENTRADAS
 - NÃO ABRIR QUANDO ENERGIZADO
 - RISCO POTENCIAL DE CARGA ELETROSTÁTICA - VER INSTRUÇÕES

-Patente EUA 9917428
 -Patente EUA D858611

