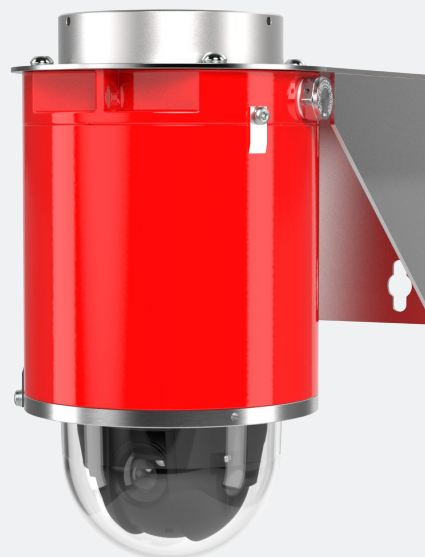


# Spectrum D210-A-2.0CH5APTZDP36-BD

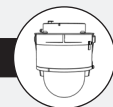
Explosion-Proof 2MP PTZ dome Camera

## Key Features

- 2MP
- 36x Zoom
- Built-in analytics
- Reliable Securing Kit included
- Made in USA
- NDAA-Compliant
- cFMus, Class I/II/III, Division 1, Zone 1/21, IECEx, ATEX, INMETRO, UKCA and PESO approved.
- Operating Temperature: -20°C to +55°C



Avigilon Camera Inside



## Description

Spectrum D201-A-2.0CH5APTZDP36-BD explosion-proof ptz camera provides wide area coverage, high speed tracking and long range detail, empowering security operators with 360° views to monitor large areas with ease, including greater zooming capabilities for evidentiary detail. This powerful camera delivers high-quality, detailed images with up to 36x zoom, which is ideal for critical infrastructure and safety. Enclosed in a patented red aluminum explosion-proof housing, it's certified (cFMus, IECEx, ATEX, INMETRO, UKCA and PESO approved) for use in potentially combustible environments.

Part Number	MP	WDR	Low-light Technology	Lens	Analytics	H.265 Technology	Avigilon Technology
D210-2.0CH5APTZDP36-BD	2MP	Included	Included	4.3 mm to 129 mm	Included	Included	2.0C-H5A-PTZ36

# Specifications

## Spectrum D201-A-2.0CH5APTZDP36-BD

Image Performance	
Image Sensor	1/2.8" progressive scan CMOS
Active Pixels	1980 (H) × 1080 (V)
Imaging Area	4.8 mm × 2.7 mm; 0.189" × 0.106"
Minimum Illumination	0.1 lux (F/1.6) in color mode; 0.03 lux (F/1.6) in monochrome
Dynamic Range	120+ dB
Image Rate	Up to 60 fps
Aspect Ratio (Resolution scaling)	Down to (16:9) 384×216 or (5:4) 320×256
3D Noise Reduction Filter	Yes
Lens	
Lens	4.3mm to 129mm, F/1.6 - F/4.7, autofocus
Angle of view	63.7° - 1.9°
Zoom	36x (with image stabilization off), 30x(with image stabilization on)
Image Control	
Video Compression	H.264 HDSM SmartCodec, H.265 HDSM SmartCodec, Motion JPEG
Streaming	Multi-stream H.264, Multi-stream H.265, Motion JPEG
Motion Detection	Pixel motion: Selectable sensitivity and threshold. Classified object detection
Electronic Shutter Control	Automatic, Manual (1/1 to 1/10,000 sec)
Iris Control	Automatic, Open, Closed
Day/Night Control	Automatic, Manual
Flicker Control	60 Hz, 50 Hz
White Balance	Automatic, Manual
Backlight Compensation	On/Off
Privacy Zones	3D, up to 64 zones
Presets	500 named presets
Tours	10 named tours
Audio Compression Method	G.711
Digital Zoom	Up to 100x
Electronic Image Stabilization	Yes
Digital Defog	Adjustable/Off
Network	
Network	100BASE-TX
Cabling Type	CAT5e
Connector	RJ-45
ONVIF	ONVIF compliance version 1.02, 2.00, Profile S, Profile T, Profile G (www.onvif.org)
Security	Password protection, HTTPS encryption, digest authentication, WS authentication, user access log, 802.1x port based authentication, FIPS 140-2 L1
Protocol	IPv6, IPv4, HTTP, HTTPS, SOAP, DNS, NTP, RTSP, RTCP, RTP, TCP, UDP, IGMP, ICMP, DHCP, Zeroconf, ARP
Streaming Protocols	RTP/UDP, RTP/UDP multicast, RTP/RTSP/TCP, RTP/RTSP/HTTP/TCP, RTP/RTSP/HTTPS/TCP, HTTP
Device Management Protocols	SNMP v2c, SNMP v3
Peripherals	
Audio Input/Output	Line level input and output
External I/O Terminals	2 Alarm in, 2 Alarm out
Onboard storage	2 × microSD/microSDHC/microSDXC slot – minimum class 6; class 10/UHS-1 or better recommended. Currently one of the two SD card slots is available for onboard storage.
Supported Video Analytics	
Objects in Area	The event is triggered when the selected object type moves into the region of interest.
Objects Loitering	The event is triggered when the selected object type stays within the region of interest for an extended amount of time.
Objects Crossing Beam	The event is triggered when the specified number of objects have crossed the directional beam that is configured over the camera's field of view. The beam can be unidirectional or bidirectional.
Object Appears or Enters Area	The event is triggered by each object that enters the region of interest. This event can be used to count objects.
Object Not Present in Area	The event is triggered when no objects are present in the region of interest.
Objects Enter Area	The event is triggered when the specified number of objects have entered the region of interest.
Objects Leave Area	The event is triggered when the specified number of objects have left the region of interest.
Object Stops in Area	The event is triggered when an object in a region of interest stops moving for the specified threshold time.
Direction Violated	The event is triggered when an object moves in the prohibited direction of travel.
Tamper Detection	The event is triggered when the scene unexpectedly changes.
Supported Classified Object types	
Object Types in Outdoor Mode	Vehicle, sub-types: Car, Truck, Bicycle, Motorcycle, Bus Person
Object Types in Indoor Mode	Person
General	
Casing (x)	A = Aluminum
Weight	A = 32 lbs (14 kg)
Dimensions	Height: 15.9 in (404 mm) ø 8.6 in (218 mm)
Power	IEEE 802.3bt, 60 WPoE
Storage Conditions	-10 °C to +70 °C (14 °F to 158 °F) Humidity 0-95%, non-condensing
Operating Conditions	-20°C to +55°C
Warranty	3-year limited warranty, see spectrumcamera.com/warranty for more information
Approvals	<b>Hazardous Area</b> FM3600, FM3615, ANSI/ISA/EN/IEC/CAN/CSA-C22.2 60079-0, ANSI/UL/EN/IEC/CAN/CSA-C22.2 60079-1, ANSI/UL/IEC/CAN/CSA-C22.2 60079-31 <b>EMC</b> EN 55032 Class A, EN 50121-4, IEC 62236-4, EN 55024, EN 61000-6-1, EN 61000-6-2, FCC Part 15 Subpart B Class A, ICES-003 Class A, VCCI Class A, RCM AS/NZS CISPR 32 Class A, KC KN32 Class A, KC KN35 <b>Safety</b> IEC/EN/UL 60950-22, IEC/EN/UL 62368-1, IS 13252 <b>Environment</b> IEC 60068-2-1, IEC 60068-2-2, IEC 60068-2-6, IEC 60068-2-14, IEC 60068-2-27, IEC 60068-2-78, IEC/EN 60529 IP66/IP67, IEC/EN 62262 IK10, NEMA 250 Type 4X, NEMA TS 2 (2.2.7-2.2.9) <b>Network</b> NIST SP500-267

# Specifications (continued)

---

Explosion-proof  
Certifications

**USA (Divisions):**

Class I Division 1 Groups B,C,D T6, type 4X, IP66/67

Class II/III, Division 1, Groups E,F,G T6

Ta = -20°C to +55°C

Certificate: FM17US0156X

**USA and Canada (Zones):**

Class I, Zone 1, AEx/Ex db IIB+H2 T6 Gb Ta

-20°C to +55°C, Type 4X, IP66/67

Zone 21, AEx/Ex tb IIIC T85 °C Db Ta = -20°C to

+55°C, Type 4X, IP66/67

Certificate: FM17US0156X and FM18CA0103X

**ATEX:**

II 2 G Ex db IIB+H2 T6 Gb Ta = -20°C to +55°C,

IP66/67

II 2 D Ex tb IIIC T85 °C Db Ta = -20°C to +55°C,

IP66/67

Certificate: FM18ATEX0057X

**IECEx:**

Ex db IIB+H2 T6 Gb Ta = -20°C to +55°C, IP66/67

Ex tb IIIC T85 °C Db Ta = -20°C to +55°C, IP66/67

Certificate: FMG 18.0020X

**INMETRO:**

Ex db IIB+H2 T6 Gb Ta = -20°C to +55°C, IP66/67

Ex tb IIIC Db T85 °C Ta = -20°C to +55°C, IP66/67

Certificate number: NCC 20.0083 X

**PESO:**

Ex db IIB+H2 T6 Gb Ta = -20°C to +55°C, IP66/67

Ex tb IIIC T85 °C Db Ta = -20°C to +55°C, IP66/67

Certificate: FMG 18.0020X

Approval No: A/P/HQ/MH/104/7899 (P578984)

---

# Approvals & Dimensions



**FM**  
APPROVED



**SPECTRUM**  
CAMERA SOLUTIONS

SPECIALIZING IN EXPLOSION PROOF TECHNOLOGY

8935 ALMEDA GENOA RD.  
HOUSTON, TEXAS 77075  
USA

CERT NO. FM17US0156X

INPUT: IEEC 802.3bt, 60 WPoE

MODEL NUMBER: D210-A-2.0CH5APTZDP36-BD SERIAL:

Class I Division 1 Groups B,C,D T6, Type 4X, IP66  
Class II/III, Division 1, Groups E,F,G T6

-WARNINGS: Ta = -20°C to +55°C

- NOT INCLUDING KETONE OR ESTER ATMOSPHERES
- CONDUIT ENTRIES ARE M20 X 1.5
- DO NOT OPEN WHEN AN EXPLOSIVE ATMOSPHERE MAY BE PRESENT
- INSTALL SEAL AT ENCLOSURE ENTRY

US Patent 9917428  
US Patent D858611



**SPECTRUM**  
CAMERA SOLUTIONS

SPECIALIZING IN EXPLOSION PROOF TECHNOLOGY

8935 ALMEDA GENOA RD. HOUSTON, TEXAS 77075 USA



**FM**  
APPROVED

MADE IN USA  
CERT NO.  
FM17US0156X  
FM18CA0103X



**CE**  
**UK**  
**CA**

2809  
1725

MODEL: D210-A-2.0CH5APTZDP36-BD SERIAL:

INPUT: IEEC 802.3bt, 60 WPoE

Class I, Zone 1, AEx/Ex db IIB+H2 T6 Gb Ta = -20°C to +55°C, Type 4X, IP66

Zone 21, AEx/Ex tb IIIC T85°C Db Ta = -20°C to +55°C, Type 4X, IP66

 II 2 G Ex db IIB+H2 T6 Gb Ta = -20°C to +55°C, IP66

 II 2 D Ex tb IIIC T85°C Db Ta = -20°C to +55°C, IP66


CERT NO. FM18ATEX0057X, IECEx FMG 18.0020X, FM22UKEX0028X

WARNING: DO NOT OPEN WHEN ENERGIZED OR WHEN AN EXPLOSIVE ATMOSPHERE MAY BE PRESENT

INSTALL SEAL AT ENCLOSURE ENTRY

US Patent 9917428  
US Patent D858611

www.spectrumcamera.com



**SPECTRUM**  
CAMERA SOLUTIONS

SPECIALIZING IN EXPLOSION PROOF TECHNOLOGY

8935 ALMEDA GENOA RD. HOUSTON, TEXAS 77075 USA

No. SERIE: TIME-DY-MN-YEAR


FABRICADO NO EUA

CERT NO. NCC 20.0083 X

MODELO: D210-A-2.0CH5APTZDP36-BD

ALIMENTAÇÃO: IEEC 802.3bt, 60 WPoE

**Segurança**





**INMETRO** OCP 0034

**NCC 20.0083 X**

NCC 20.0083 X

Ex db IIB+H2 T6 Gb Ta = -20°C to +55, IP66

Ex tb IIIC T85°C Db Ta = -20°C to +55°C, IP66

ATENÇÃO:

- ENTRADAS DE CABOS M20 X 1.5
- NÃO ABRA ENQUANTO UMA ATMOSFERA EXPLOSIVA PUDE ESTAR PRESENTE
- INSTALAR ANEL DE VEDAÇÃO NAS ENTRADAS
- NÃO ABRIR QUANDO ENERGIZADO
- RISCO POTENCIAL DE CARGA ELETROSTÁTICA - VER INSTRUÇÕES

Patente EUA 9917428  
-Patente EUA D858611

