

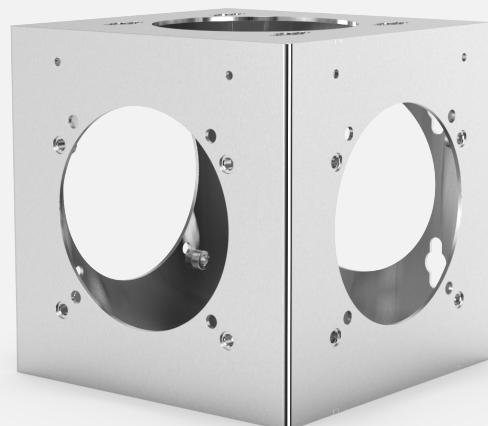
Spectrum SCS-MM

Multi-mount for explosion-proof cameras

EXPLSION
PROOF CAMERA

Features

- Mounts up to (4) cameras
- Mounts camera(s) further away from structure
- Pendant on ceilings
- Horizontal on walls
- Stainless Steel
- For D & F-series cameras



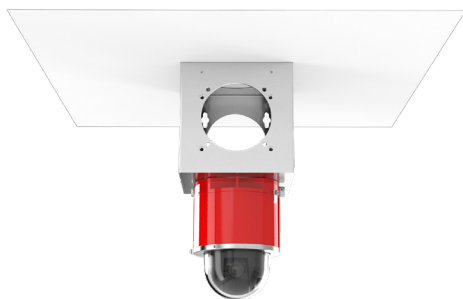
Description

Spectrum SCS-MM multi-mount allows the camera(s) to be mounted further away from the structure, additionally the camera can be mounted horizontal on walls or pendant on ceilings. The SCS-MM is able to mount (4) cameras.

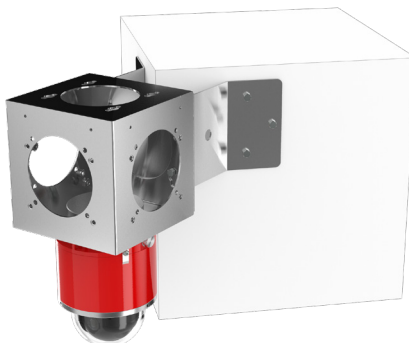
Specifications

Dimensions	279 x 279 x 279 mm(11 x 11 x 11 in.)
Weight	9 kg (20 lbs)
Material	Stainless steel
Maximum Load Tested	907 kg (2000 lbs)
Compatability	D-Series & F-Series Cameras

Mounted on ceiling



Mounted on corner



Mounted on pole

