

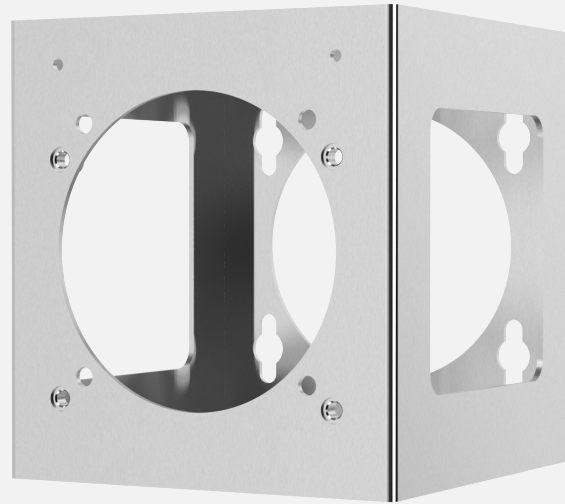
Spectrum SCS-UM

Universal mount

EXPLSION
PROOF CAMERA

Features

- Mounts camera further away from structure
- Pendant on ceilings
- Horizontal on walls
- Stainless Steel
- For D & F-series cameras



Description

Spectrum SCS-UM universal mount allows the camera to be mounted further away from the structure, additionally the camera can be mounted horizontal on walls or pendant on ceilings.

Specifications

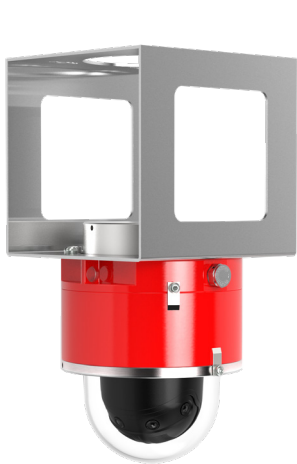
Dimensions 254 x 254 x 517.525mm (10 x 10 x 203/8")

Weight 5.6kg (12.4lbs)

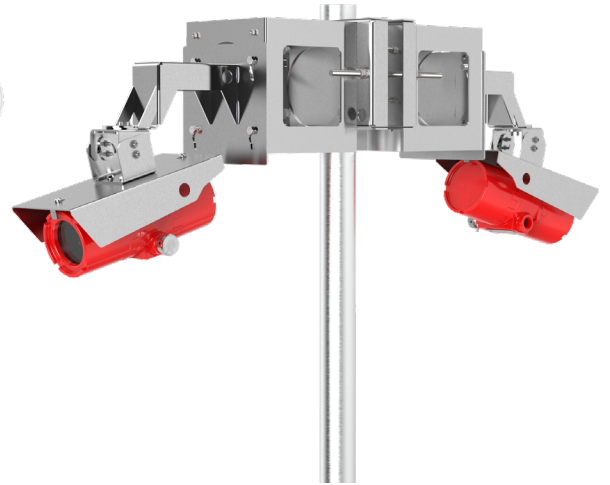
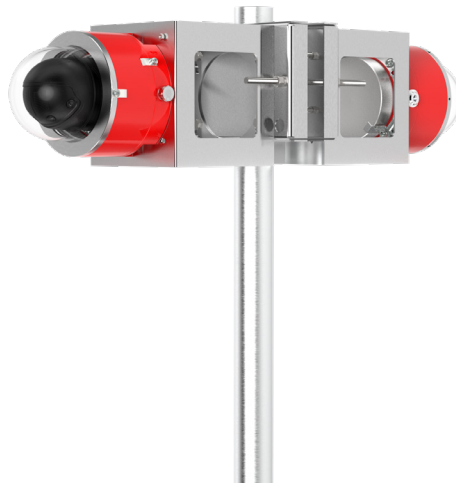
Material Stainless steel

Maximum Load Tested 1000 kg (2200lb)

Compatibility D-Series & F-Series Cameras



*Shown with SCS-PM pole mount



*Shown with SCS-PM pole mount