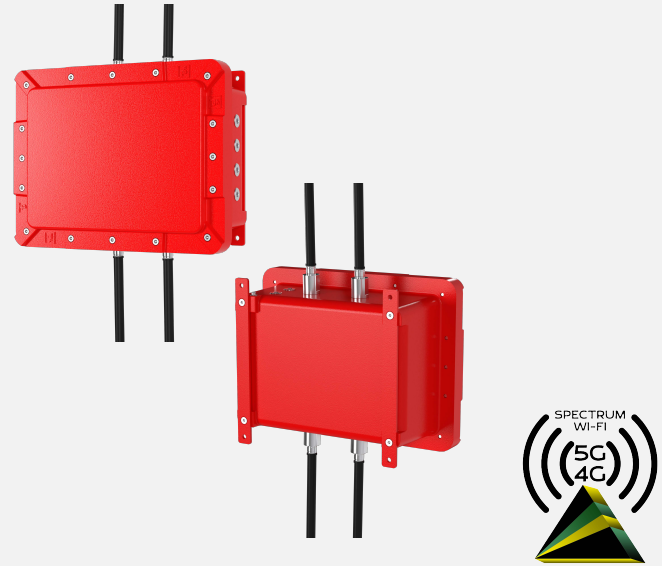


Spectrum ZONE

Wireless Access Point Junction Box

Features

- Copper-free aluminum enclosure
- Suitable for operation in Class I, II, Division 1, Groups B,C,D,E,F,G
- Suitable for operation in Class I, Zone 1, Groups IIB+H2
- Suitable for operation in Class II, Zone 21, Group IIIC
- Degree of protection IP66 or IP66 / IP67, NEMA Type 4X
- Customizable configuration of operators, cable entry quantities and cable gland types as per specification
- Integration of electrical components and operating elements as supplied



Description

The Spectrum ZONE-AI-FIVE-MESH Wireless Access Port JB's are certified as above. The JB's are supplied complete with Spectrum's SCSH8082C-bt-A Network Switch equipped with 8 x 10/100/1000M TX 95W 802.3bt PSE ports and 2 x 10/100/1000M TX/1000M SFP Combo ports with a total power of 400W.

The ZONE-AI and ZONE-FIVE models are not only suitable for use on the Commercial Networks of T-Mobile, AT&T and Verizon, but they are also suitable for use on the Private Networks of N77 & N48 (5G) and B48 (4G).

They are manufactured from copper-free aluminum with increased corrosion resistance. This durability as well as the flexible customization options cover the requirements of many industries including offshore and marine applications.

Part No.	Description	Certified Temperature °C (°F)
ZONE-AI-DIV1-MIC-713-OX4A1-HPOE8	Advantech - 100 / 240 VAC - 50 / 60 Hz - 10 A	-25 to +60°C (-13 to +140°F)
ZONE-FIVE-DIV1-RUTM50-HPOE8	Teltonika 5G - 120 / 240 VAC - 50 / 60 Hz	-25 to +60°C (-13 to +140°F)
ZONE-FIVE-DIV1-XR60-HPOE8	Semtech 5G - 120 / 240 VAC - 50 / 60 Hz	-25 to +60°C (-13 to +140°F)
ZONE-FIVE-DIV1-R980-HPOE8	Cradlepoint 5G - 120 / 240 VAC - 50 / 60 Hz	-25 to +60°C (-13 to +140°F)
ZONE-MESH-DIV1-MERAKI76-HPOE8	Cisco Meraki Mesh 76 - 120 / 240 VAC - 50 / 60 Hz	-25 to +55°C (-13 to +131°F)



Specifications

Spectrum ZONE-AI-FIVE-MESH

General - Wireless Access Point

ZONE-AI

- Nvidia Jetson Orin Network Interface
- Quectel 5G Module
- Fiber with switch provided
- 100 - 240 VAC
- 8 POE Switch 90W
- N77 & N48 Private 5G Networks
- -25°C to +60°C (-13°F to +140°F)



ZONE-FIVE

- 5G Network Routers
- Fiber with switch provided
- 100 - 240 VAC
- 8 POE Switch 90W
- N77 Private 5G Network
- B48 Private 4G LTE Network
- -25°C to +60°C (-13°F to +140°F)



ZONE-MESH

- Cisco Meraki MR76 Access Point
- Fiber with switch provided
- 100 - 240 VAC
- 8 POE Switch 90W
- -25°C to +55°C (-13°F to +131°F)



General - Network Switch

- Super high-power Industrial Gigabit Switch
- Full 8 x 10/100/1000M TX 95W 802.3bt PSE ports and 2 x 10/100/1000M TX/1000M SFP Combo ports.
- Can supply PoE to high-power demanding devices including outdoor speed domes, outdoor lamps, or other ultra-high-power PD devices.
- Designed for IP surveillance, traffic monitoring, and for a broad range of applications.
- Can be used as a stand-alone device or can be cascaded/daisy-chain to other devices to cover a wider area through SFP connection.

General - Power Supply

- Slim and Low profile (31mm)
- Fanless design, 500W convection
- Withstand 300VAC surge input for 5 seconds
- Built-in active PFC function
- Protection against Short circuit, Overload, Over voltage, Over temperature
- DC OK active signal and redundant function (option)
- Operating altitude up to 5000 meters
- LED indicator for Power On

Approvals

ZONE-AI



 8935 Alameda Genoa Rd.
Houston, Texas 77075
USA

Intertek
 Control No. XXXXXXXX
 Conforms to UL1203:2013 Ed. 5 +R:16Oct2018
 Conforms to CSA C22.2#25 and #30

DRAWING NUMBER:
 ZONE-AI-DIV1-MIC-713-0XAA1-HPOE8
Industrial Control Panel
 Model: MODEL-ZONE-AI-DIV1-MIC-713-0XAA1-HPOE8
 S/N:

TYPE 4X
 CLASS I, II DIVISION 1 GROUPS B,C,D,E,F,G
 CLASS I ZONE 1 GROUPS IIB+H2
 CLASS II ZONE 21 GROUP IIIC
 T5 Tamb -20C to +60C
INPUT: 110-240VAC 50/60Hz 10A OUTPUT: IEEE 802.3BT 480W

CAUTION: TO REDUCE THE RISK OF IGNITION OF HAZARDOUS ATMOSPHERES, DISCONNECT THE EQUIPMENT FROM THE SUPPLY CIRCUIT BEFORE OPENING. KEEP ASSEMBLY TIGHTLY CLOSED WHEN IN OPERATION.
 MISE EN GARDE: OUVRIER LE CIRCUIT AVANT D'ENLEVER LE COUVERCLE. GARDER LE COUVERCLE BIEN FERME TAN QUE LES CIRCUITS SONT SOUS TENSION.

ZONE-FIVE



 8935 Alameda Genoa Rd.
Houston, Texas 77075
USA



Intertek
 Control No. XXXXXXXX
 Conforms to UL1203:2013 Ed. 5 +R:16Oct2018
 Conforms to CSA C22.2#25 and #30

DRAWING NUMBER:
 ZONE-FIVE-DIV1-RUTM50-HPOE8
Industrial Control Panel
 Model: MODEL-ZONE-FIVE-DIV1-RUTM50-HPOE8
 S/N:

TYPE 4X
 CLASS I, II DIVISION 1 GROUPS B,C,D,E,F,G
 CLASS I ZONE 1 GROUPS IIB+H2
 CLASS II ZONE 21 GROUP IIIC
 T5 Tamb -20C to +60C
INPUT: 110-240VAC 50/60Hz 10A OUTPUT: IEEE 802.3BT 480W

CAUTION: TO REDUCE THE RISK OF IGNITION OF HAZARDOUS ATMOSPHERES, DISCONNECT THE EQUIPMENT FROM THE SUPPLY CIRCUIT BEFORE OPENING. KEEP ASSEMBLY TIGHTLY CLOSED WHEN IN OPERATION.
 MISE EN GARDE: OUVRIER LE CIRCUIT AVANT D'ENLEVER LE COUVERCLE. GARDER LE COUVERCLE BIEN FERME TAN QUE LES CIRCUITS SONT SOUS TENSION.

ZONE-MESH



 8935 Alameda Genoa Rd.
Houston, Texas 77075
USA

Intertek
 Control No. XXXXXXXX
 Conforms to UL1203:2013 Ed. 5 +R:16Oct2018
 Conforms to CSA C22.2#25 and #30

DRAWING NUMBER:
 ZONE-MESH-DIV1-MERAK76-HPOE8
Industrial Control Panel
 Model: MODEL-ZONE-MESH-DIV1-MERAK76-HPOE8
 S/N:

TYPE 4X
 CLASS I, II DIVISION 1 GROUPS B,C,D,E,F,G
 CLASS I ZONE 1 GROUPS IIB+H2
 ZONE 21 GROUP IIIC
 T5 Tamb -20C to +55C
INPUT: 110-240VAC 50/60Hz 10A OUTPUT: IEEE 802.3BT 480W

CAUTION: TO REDUCE THE RISK OF IGNITION OF HAZARDOUS ATMOSPHERES, DISCONNECT THE EQUIPMENT FROM THE SUPPLY CIRCUIT BEFORE OPENING. KEEP ASSEMBLY TIGHTLY CLOSED WHEN IN OPERATION.
 MISE EN GARDE: OUVRIER LE CIRCUIT AVANT D'ENLEVER LE COUVERCLE. GARDER LE COUVERCLE BIEN FERME TAN QUE LES CIRCUITS SONT SOUS TENSION.

Dimensions

Spectrum ZONE-A-FIVE-MESH

