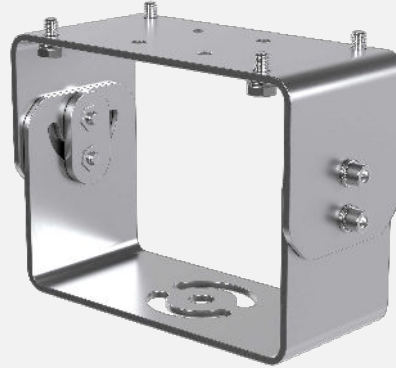


Spectrum F2XX-GM

General Mount for F200 Series Fixed Cameras

Features

- Resistant to corrosion
- Sturdy and safe
- 304L Stainless steel
- For F200 Series fixed cameras
- Supplied with all F200 cameras as standard



Description

Spectrum F2XX-GM stainless steel General Mount is designed for the F200 Series camera line. The General Mount offers the ability to install the camera onto any other approved accessory. It is resistant to corrosion and is ideal for onshore, offshore, marine, and heavy industrial applications.

Specifications

Dimensions	6.323 x 4.742 x 3 in (160.6 x 120.5 x 76.2 mm)
Weight	2.35 lb (1.07 kg)
Material	304L Stainless steel
Compatability	F200 Series Cameras

